



Gaither[®]
PROFESSIONAL EQUIPMENT

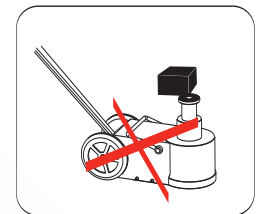
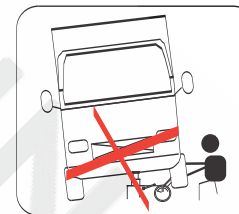
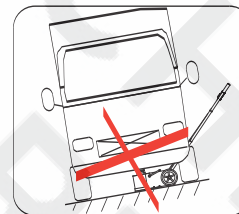
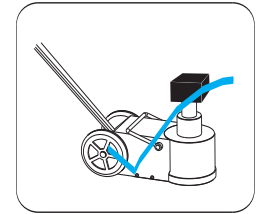
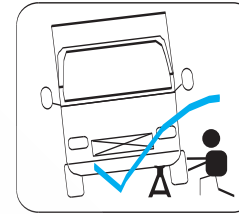
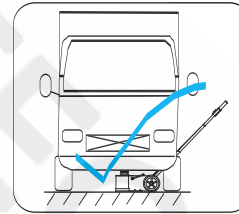
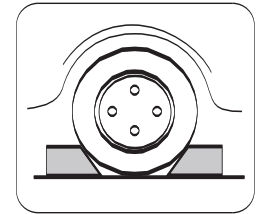
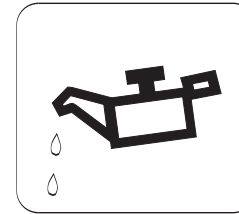
**REACHING
FOR NEW
HEIGHTS!**



INSTRUCTIONS FOR
GT4533 & GT4534



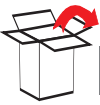
WARNINGS



Technical Data

MODEL	CAPACITY	WORKING PRESSURE	MIN HEIGHT	MAX HEIGHT	LIFTING HEIGHT	EXTENSION
GT4533	45T/20T	8-12bar/120-175psi	150mm	424mm	129mm	100+45mm
GT4534	45T/20T/10T	8-12bar/120-175psi	130mm	434mm	159mm	100+45mm

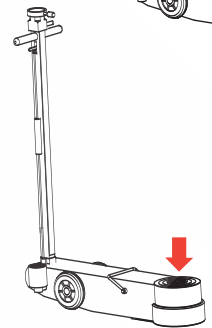
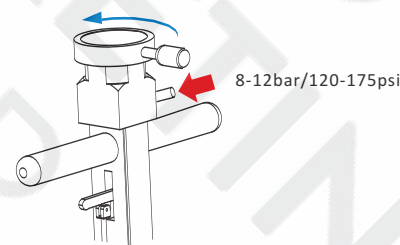
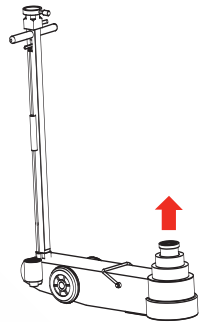
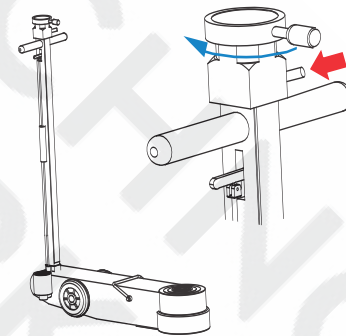
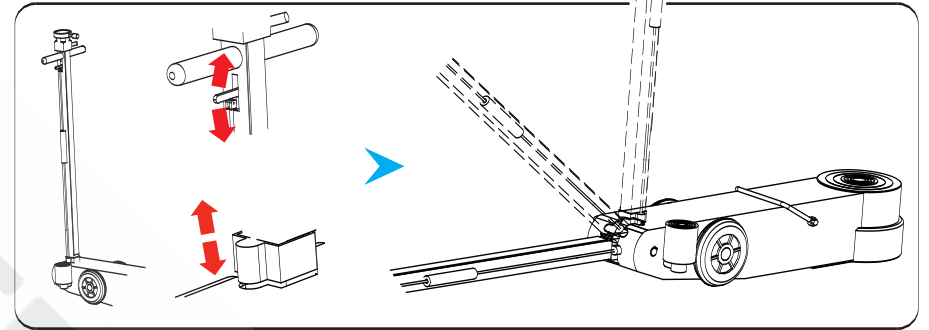
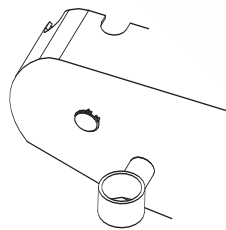
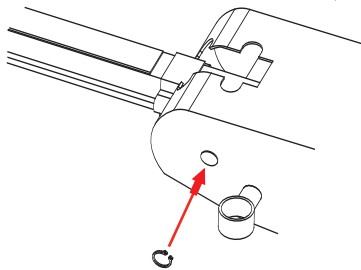
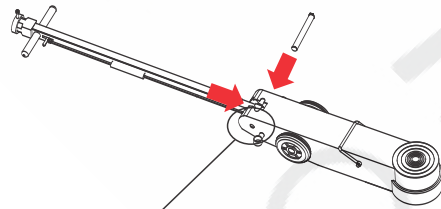
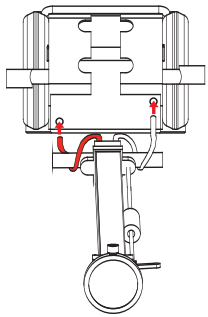
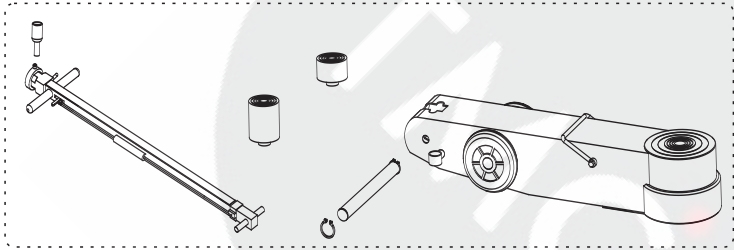
Warranty terms (with a minimum of 12 months), service availability, and service response times may vary from country or region to country or region.

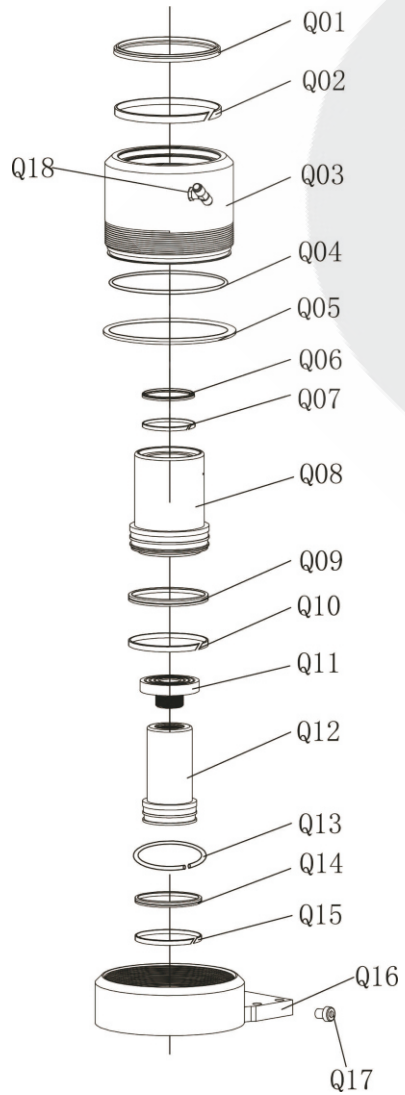


Assembly



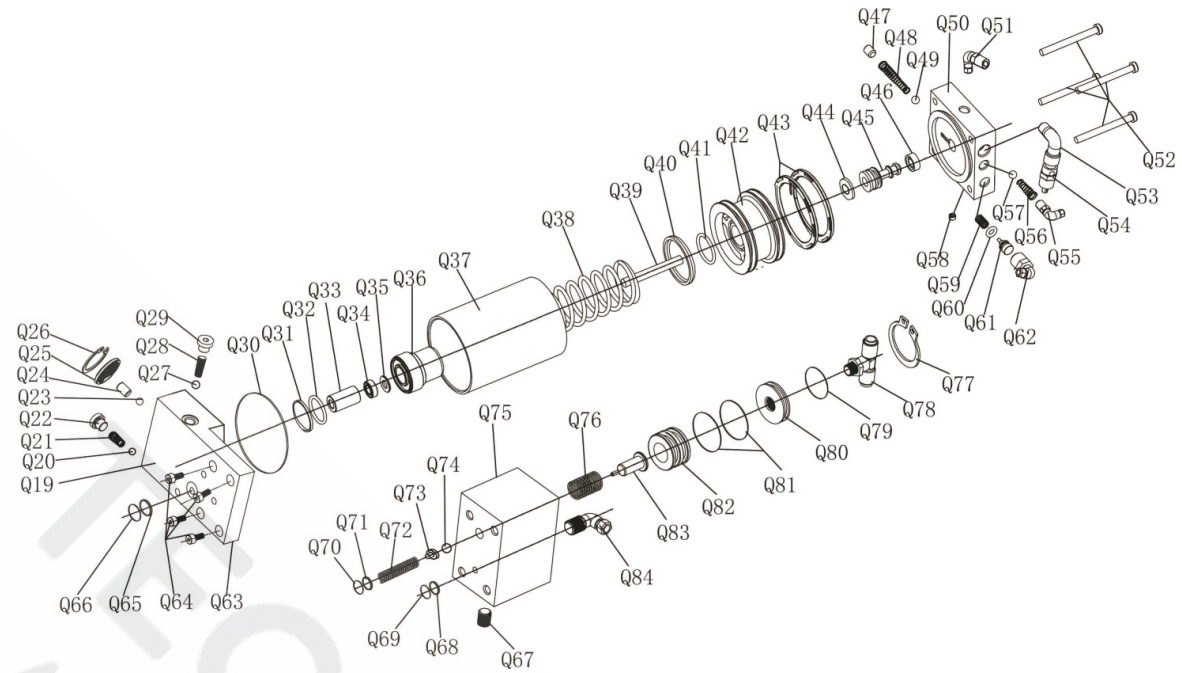
Usage





NO.	Description
Q01	Dustproof Ring
Q02	Guide Ring
Q03	Outer Sleeve
Q04	O Ring
Q05	Locking Ring
Q06	Dustproof Ring
Q07	Guide Ring
Q08	Inner Sleeve
Q09	XTP Seal
Q10	Guide Ring
Q11	Top Cover
Q12	Piston
Q13	Spring Washer
Q14	XTP Seal
Q15	Guide Ring
Q16	Base
Q17	Screw
Q18	Tie In

GT4533-cylinder

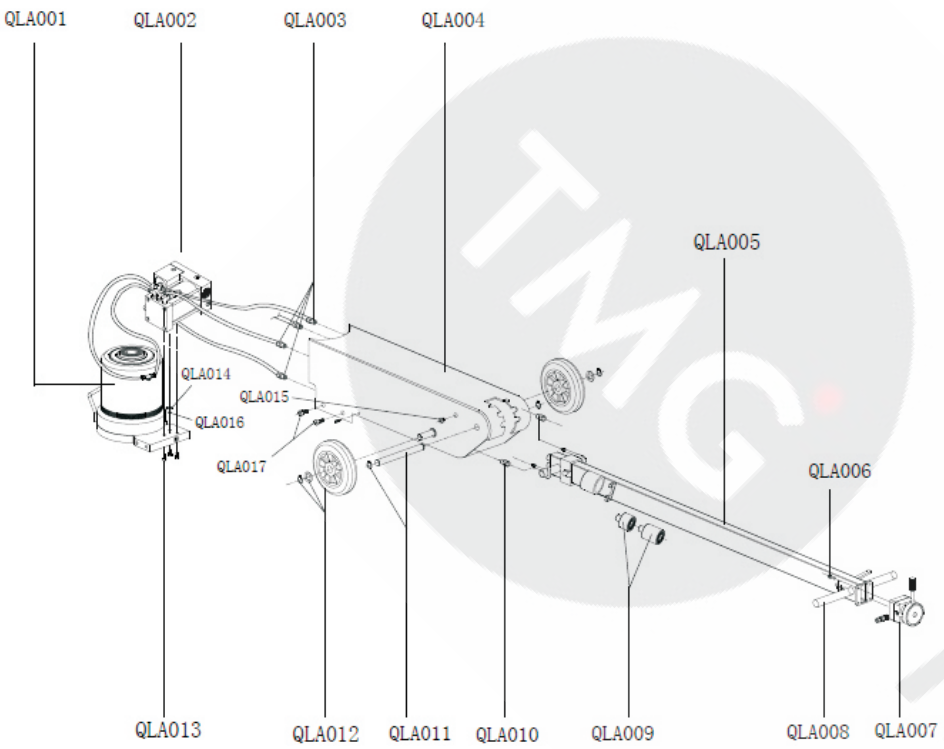


NO.:	Description
Q20	Steel Ball
Q21	Spring
Q22	Screw Nut
Q23	Steel Ball
Q24	Screw Nut
Q25	Silencer
Q26	Clamp
Q27	Steel Ball
Q28	Spring
Q29	Screw Nut
Q30	O Ring
Q31	O Ring
Q32	Locking Ring
Q33	Guide Bushing
Q34	B3 Sealing
Q35	Locking Ring
Q36	Plunger Bushing
Q37	Air Cylinder
Q38	Spring
Q39	Plunger Rod
Q40	Plunger Cap
Q41	O Ring
Q42	Piston

NO.:	Description
Q43	PK sealing
Q44	Z8 Sealing
Q45	Piston
Q46	Rubber Cap
Q47	Screw Nut
Q48	Spring
Q49	Rubber ball
Q50	Air Inlet Base
Q51	Tie In
Q52	Screw
Q53	Tie In
Q54	Safe Valve
Q55	Tie In
Q56	Spring
Q57	Rubber ball
Q58	Screw Nut
Q59	Spring
Q60	O ring
Q61	Piston
Q62	Tie In
Q63	Check Valve
Q64	Screw
Q65	Locking Ring

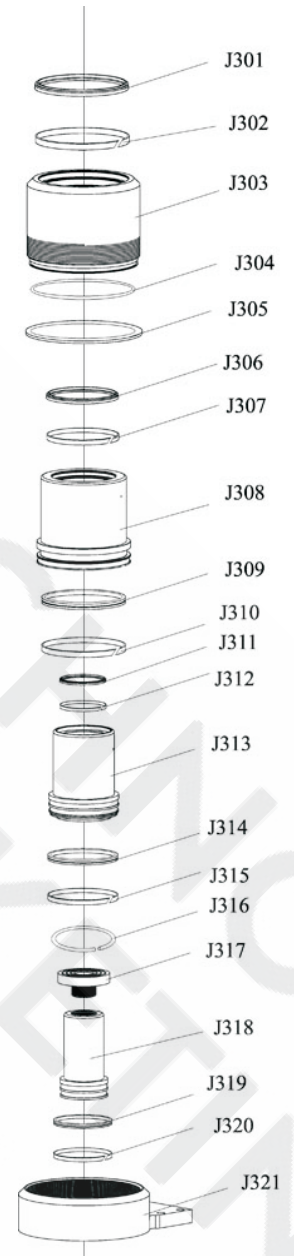
NO.:	Description
Q66	O Ring
Q67	Screw
Q68	Locking Ring
Q69	O Ring
Q70	O Ring
Q71	Locking Ring
Q72	Spring
Q73	Steel Ball Bulkhead
Q74	Steel Ball
Q75	Oil Drain Valve
Q76	Spring
Q77	Tie In
Q78	Tie In
Q79	O Ring
Q80	O Ring
Q81	O Ring
Q82	Oil Drain Piston
Q83	Oil Drain Bolt
Q84	Tie In

GT4533-pump



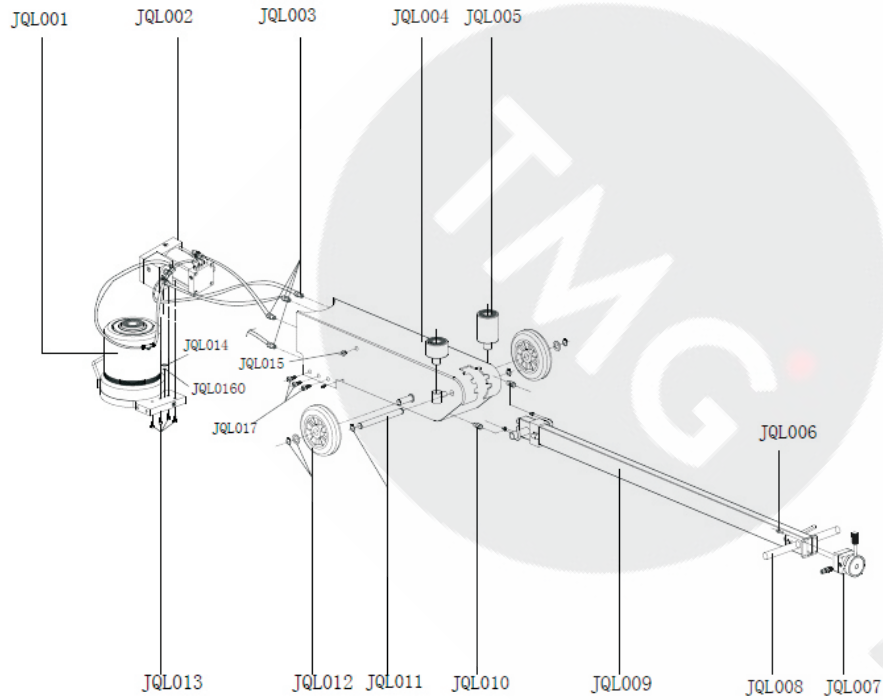
NO.	Description
QLA001	Oily Cylinder Assy
QLA002	Pump Assy
QLA003	Tie In
QLA004	Housing
QLA005	Handle
QLA006	Screw
QLA007	Switch
QLA008	Handle Grip
QLA009	Adaptors
QLA010	Tie In
QLA011	Axle
QLA012	Wheel Sets
QLA013	Screws
QLA014	O ring
QLA015	Screw nut
QLA016	Spacer
QLA017	Screws

GT4533-Main



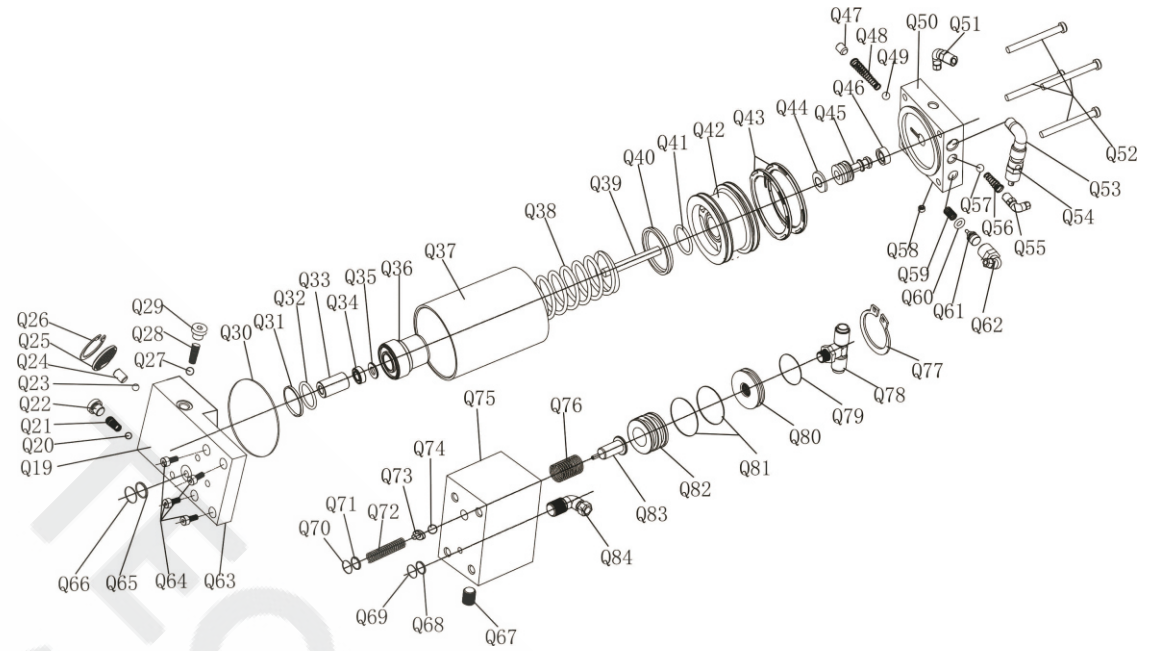
NO.	Description
J301	dustproof ring
J302	guide ring
J303	outer sleeve
J304	o ring
J305	locking ring
J306	dustproof ring
J307	guide ring
J308	inner sleeve
J309	XTP seal
J310	guide ring
J311	dustproof ring
J312	guide ring
J313	inner sleeve
J314	XTP seal
J315	guide ring
J316	spring washer
J317	top cover
J318	piston
J319	XTP seal
J320	guide ring
J321	base

GT4534-Cylinder



NO.	Description
JQL001	Oily Cylinder Assy
JQL002	Pump Assy
JQL003	Tie In
JQL004	Housing
JQL005	Adaptors
JQL006	Screw
JQL007	Switch
JQL008	Handle Grip
JQL009	Handle
JQL010	Tie In
JQL011	Axle
JQL012	Wheel Sets
JQL013	Screw
JQL014	O ring
JQL015	screw
JQL016	Space
JQL017	Screws

GT4534-Main



NO.:	Description
Q20	Steel Ball
Q21	Spring
Q22	Screw Nut
Q23	Steel Ball
Q24	Screw Nut
Q25	Silencer
Q26	Clamp
Q27	Steel Ball
Q28	Spring
Q29	Screw Nut
Q30	O Ring
Q31	O Ring
Q32	Locking Ring
Q33	Guide Bushing
Q34	B3 Sealing
Q35	Locking Ring
Q36	Plunger Bushing
Q37	Air Cylinder
Q38	Spring
Q39	Plunger Rod
Q40	Plunger Cap
Q41	O Ring
Q42	Piston

NO.:	Description
Q43	PK sealing
Q44	Z8 Sealing
Q45	Piston
Q46	Rubber Cap
Q47	Screw Nut
Q48	Spring
Q49	Rubber ball
Q50	Air Inlet Base
Q51	Tie In
Q52	Screw
Q53	Tie In
Q54	Safe Valve
Q55	Tie In
Q56	Spring
Q57	Rubber ball
Q58	Screw Nut
Q59	Spring
Q60	O ring
Q61	Piston
Q62	Tie In
Q63	Check Valve
Q64	Screw
Q65	Locking Ring

GT4534-pump

NO.:	Description
Q66	O Ring
Q67	Screw
Q68	Locking Ring
Q69	O Ring
Q70	O Ring
Q71	Locking Ring
Q72	Spring
Q73	Steel Ball Bulkhead
Q74	Steel Ball
Q75	Oil Drain Valve
Q76	Spring
Q77	Tie In
Q78	Tie In
Q79	O Ring
Q80	O Ring
Q81	O Ring
Q82	Oil Drain Piston
Q83	Oil Drain Bolt
Q84	Tie In

F

DECLARATION DE CONFORMITÉ

Nous, **Gaither Europe BV**

Adresse : Rechtzaad 6

4703 RC Roosendaal – The Netherlands

déclarons sous notre seule responsabilité que les produits auxquels se réfère cette déclaration sont conformes aux dispositions des Directives : 2006/42/CE, EN 1494

NL

VERKLARING VAN OVEREENKOMST

Wij, **Gaither Europe BV**

Adres: Rechtzaad 6

4703 RC Roosendaal – The Netherlands

verklaaren geheel onder eigen verantwoordelijkheid dat de volgende producten, waarop deze verklaring betrekking heeft, in overeenstemming zijn met de bepalingen van Richtlijn: 2006/42/CE, EN 1494

I

DICHIARAZIONE DI CONFORMITÀ

Noi, **Gaither Europe BV**

Indirizzo: Rechtzaad 6

4703 RC Roosendaal – The Netherlands

dichiariamo sotto la nostra esclusiva responsabilità che i prodotti ai quali questa dichiarazione si riferisce sono conformi a quanto previsto dalle direttive: 2006/42/CE, EN 1494

E

DECLARACIÓN DE CONFORMIDAD

We, **Gaither Europe BV**

Dirección: Rechtzaad 6

4703 RC Roosendaal – The Netherlands

declaramos bajo nuestra exclusiva responsabilidad la conformidad de los productos a los que refiere esta declaración, con las disposiciones de Directiva : 2006/42/CE, EN 1494

P

DECLARAÇÃO DE CONFORMIDADE

Nós, **Gaither Europe BV**

Endereço: Rechtzaad 6

4703 RC Roosendaal – The Netherlands

declaramos, sob nossa única responsabilidade, que os seguintes produtos, incluídos nesta declaração estão em conformidade com o disposto na Directiva : 2006/42/CE, EN 1494

SE

FÖRSÄKRAN OM ÖVERENSSTÄMMELSE

Vi, **Gaither Europe BV**

Adress: Rechtzaad 6

4703 RC Roosendaal – The Netherlands

försäkrar under eget ansvar att följande produkter som omfattas av denna försäkran är i överensstämmelse med villkoren i direktiv: 2006/42/CE, EN 1494

N

ERKLÆRING OM OVERENSSTEMMELSE

Vi, **Gaither Europe BV**

Adresse : Rechtzaad 6

4703 RC Roosendaal – The Netherlands

erklærer på eget ansvar, at følgende produkter som dekkes av denne erklæringen, er i overensstemmelse med bestemmelsene i Direktiv : 2006/42/CE, EN 1494

DK

ÖVERENSSTEMMELSESERKLÄRING

Vi, **Gaither Europe BV**

Adresse: Rechtzaad 6

4703 RC Roosendaal – The Netherlands

erklærer på eget ansvar et følgende produkter som er omfattet af denne erklæring, er i overensstemmelse med bestemmelserne i Direktiv: 2006/42/CE, EN 1494

FIN

VAATIMUSTENMUKAISUUSVAKUUTUS

Me, **Gaither Europe BV**

osoite: Rechtzaad 6

4703 RC Roosendaal – The Netherlands

vakuutamme yksinomaan omalia vastuullamme, että seuraavat tuotteet, joihin tämä vakuutus liittyy, ovat seuraavien direktiivien vaatimusten mukaisia : 2006/42/CE, EN 1494

GB

DECLARATION OF CONFORMITY

We, **Gaither Europe BV**

Address: Rechtzaad 6

4703 RC Roosendaal – The Netherlands

declare under our sole responsibility that the following products to which this declaration relates conform with the provisions of Directives : 2006/42/CE, EN 1494

DWir, **Gaither Europe BV**

Anschrift : Rechtzaad 6

4703 RC Roosendaal – The Netherlands

erklären auf eigene Verantwortung, daß folgende Produkte, auf die sich diese Erklärung bezieht, mit den Bedingungen der Direktiven 2006/42/CE EN 1494 übereinstimmen.

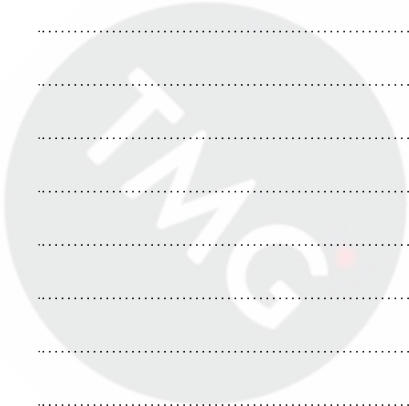


Typ, *tyyppi*, type, *type*, type, *Typ*, type, *tipo*, type, *tipo*, tipo
 Cf 4533, Cf 4534

Ralph Dubbeldam
 Managing Director
Gaither Europe BV
 Date: 2015-11-01

GAITHER

NOTES



SMART
TECHNO
GROUP
MARKETING

ABOUT US

Gaither Tool Company, Inc. founded in 1988, is an international organization committed to serving the tire and trucking industry. It invents and manufactures convenient tools and systems needed to service and maintain tires and wheel assemblies.

Gaither Tool Company, Inc. continually invests in research and development to bring to its customers the most effective tools in the business. It strives to improve efficiency and reduce costs for customers all over the world working in truck maintenance shops as well as on-the-road tire service providers. Bandag, Euromaster/Michelin, Bridgestone's First Stop, The United States Armed Forces... just to name a few.

Gaither supplies products to customers in over 100 countries, selling through exclusive and nonexclusive distributors. Gaither Tool Company, Inc. is headquartered in Jacksonville, Illinois, U.S.A. In 1997 it opened a branch office located in Roosendaal, Holland to better serve the European market. In 1999 that office was incorporated in Holland and Gaither Europe BV was started. Gaither's manufacturing plant and warehousing for International distribution is located in Taichung, Taiwan.

With a strategically placed location in both The United States and The Netherlands, we are able to serve the global industry



CONTACT US

gaithereurope.com

GAITHER EUROPE BV

Rechtzaad 6
4703 RC Roosendaal (Holland)

† +31 (0) 165 554475

f +31 (0) 165 391819

e evd@gaithereurope.com



CHANGING THE WAY THE WORLD CHANGES TIRES