



Gaither[®]
PROFESSIONAL EQUIPMENT

**REACHING
FOR NEW
HEIGHTS!**

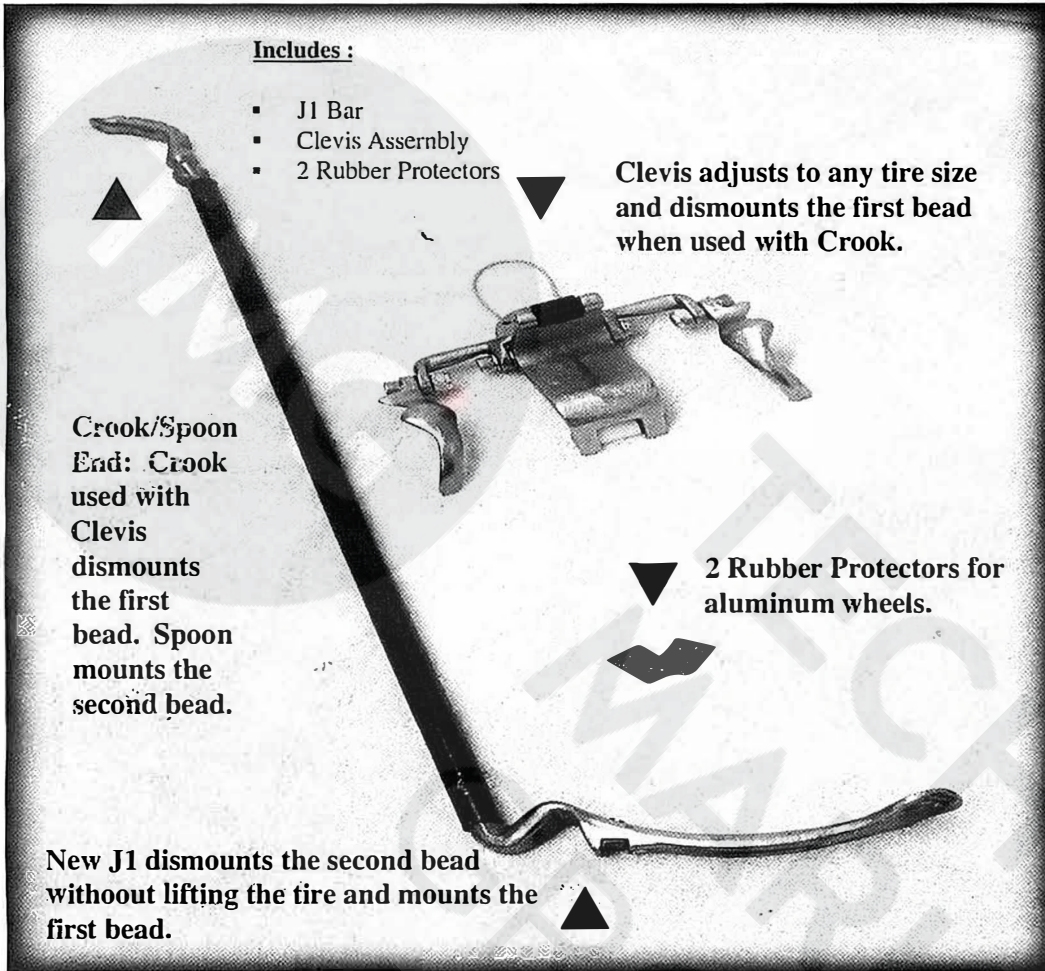


INSTRUCTIONS FOR
J-1 BAR TYRE LEVER



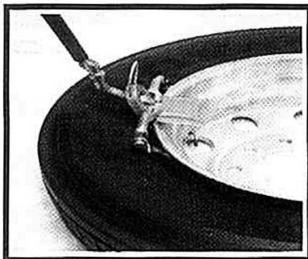
Gaither's New Series of Tire-Changing Tools

GAITHER TOOL-J1

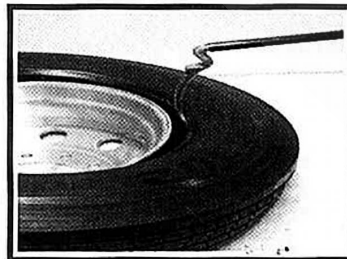


GAITHER TOOL-J1 allows any 22.5" or 24.5" tire to be eased off of the wheel, including aluminum, without lifting the tire/wheel assembly.

- Only 2 pieces needed to mount & dismount any 22.5" or 24.5" tire.
- Easily dismount aluminum wheels without scratching.
- Protect all tires from bead damage.



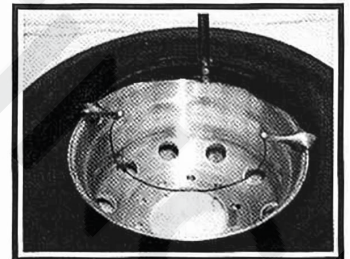
Clevis & Crook dismounting first bead



GAITHER TOOL - J1 dismounting second bead.



GAITHER TOOL - J1 mounting first bead.



Spoon mounting second bead. (Beadkeepers TM optional)

Faint background text, likely bleed-through from the reverse side of the page.

Faint background text, likely bleed-through from the reverse side of the page.

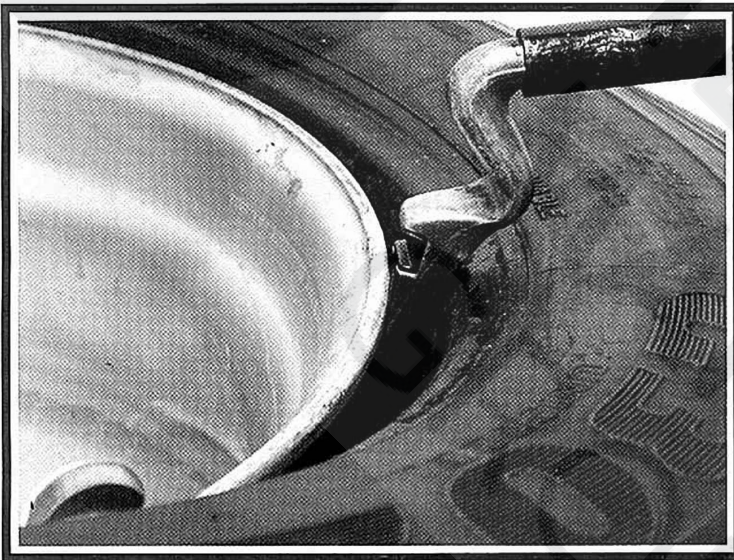


GAITHER TOOL-J1

ALUMINUM WHEEL DISMOUNTING PROCESS



Proceed using Steps 1 through 4 from the Dismounting Process.
Continue using the following procedures for dismounting
aluminum wheels:



Step 5: Insert the J1 only until the flange of the wheel meets the protective insert below the notch.

Step 6: Proceed with Step 6 from Dismounting Process and apply downward pressure to the bar.

The J1 is inserted onto steel wheels as shown above. Do not use this method on aluminum wheels.

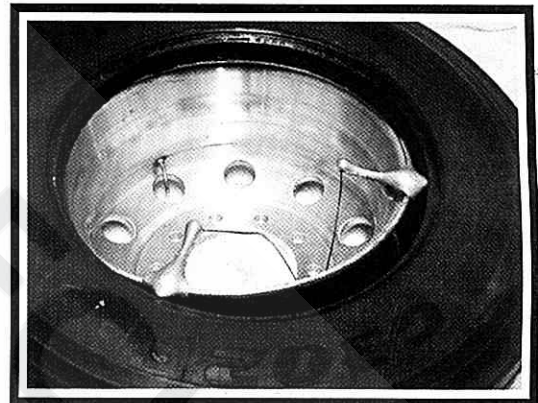


GAITHER TOOL-J1

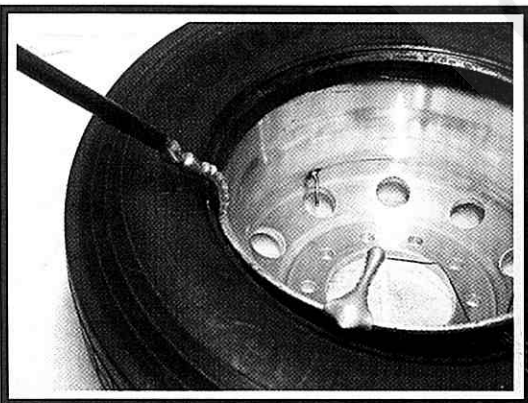
MOUNTING PROCESS



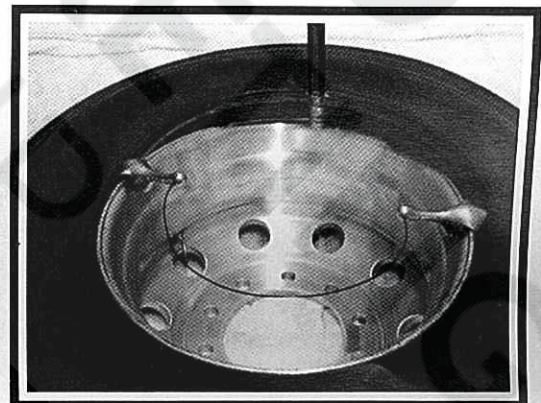
Step 1: Place the lip of the J1 on the flange of the wheel and force the first bead of the tire downward.



Step 2: Place the Beadkeepers TM on the flange of the wheel as far apart as possible. Rubber coated Beadkeepers TM are available.



Step 3: Use the Spoon End to mount the second bead. Slide one Beadkeeper TM toward the bar as the bead is mounted.



Step 4: Continue the process from Step 3 until the tire is completely mounted.



GAITHER TOOL-J1

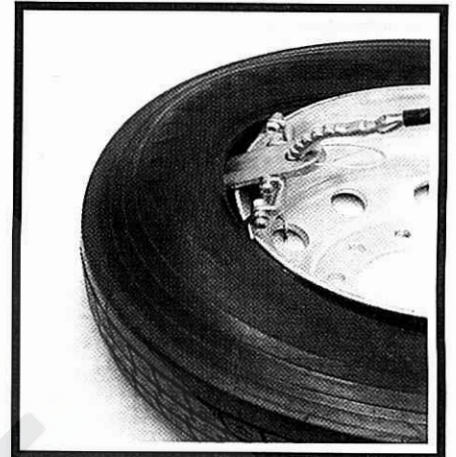
DISMOUNTING PROCESS



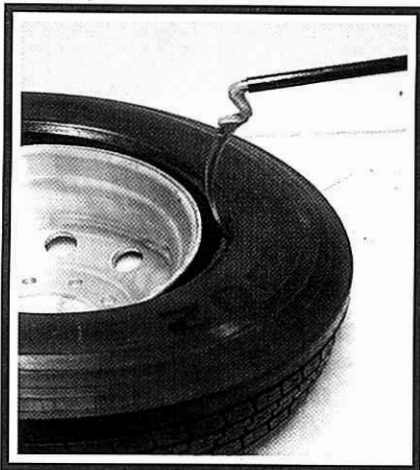
Step 1: Place Clevis between the wheel and tire with your foot.



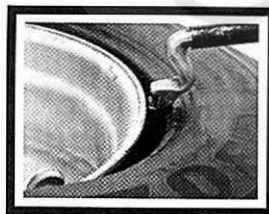
Step 2: Insert Crook End into the back of Clevis. (Crook End adjustable according to tire stiffness and size.)



Step 3: Step across the tire, pull the bar toward you, and continue downward force until the first bead is dismounted.



Step 4: Insert the J1 tool between the wheel and tire.



Aluminum Wheel



Steel Wheel

Step 5: Make sure that the flange of the wheel fits into the notch of the J1.



Step 6: Step across the tire and apply downward pressure to the bar until the second bead is completely dismounted.

GAITHER

NOTES



TECHNO
MARKETING
GROUP

ABOUT US

Gaither Tool Company, Inc. founded in 1988, is an international organization committed to serving the tire and trucking industry. It invents and manufactures convenient tools and systems needed to service and maintain tires and wheel assemblies.

Gaither Tool Company, Inc. continually invests in research and development to bring to its customers the most effective tools in the business. It strives to improve efficiency and reduce costs for customers all over the world working in truck maintenance shops as well as on-the-road tire service providers. Bandag, Euromaster/Michelin, Bridgestone's First Stop, The United States Armed Forces... just to name a few.

Gaither supplies products to customers in over 100 countries, selling through exclusive and nonexclusive distributors. Gaither Tool Company, Inc. is headquartered in Jacksonville, Illinois, U.S.A. In 1997 it opened a branch office located in Roosendaal, Holland to better serve the European market. In 1999 that office was incorporated in Holland and Gaither Europe BV was started. Gaither's manufacturing plant and warehousing for International distribution is located in Taichung, Taiwan.

With a strategically placed location in both The United States and The Netherlands, we are able to serve the global industry



CONTACT US

gaithereurope.com

GAITHER EUROPE BV

Rechtzaad 6
4703 RC Roosendaal (Holland)

† +31 (0) 165 554475

f +31 (0) 165 391819

e evd@gaithereurope.com



CHANGING THE WAY THE WORLD CHANGES TIRES